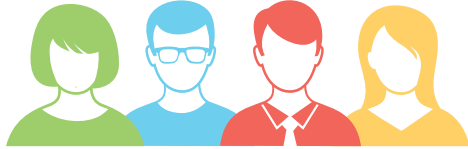


WHAT IS A CHAPLAINCY SERVICE?

A Chaplaincy Service is provided by a Pastoral Care Worker (PCW) in a school community on behalf of the local combined Christian community to provide additional support as needed.



Pastoral Care Workers

- Provide pastoral care in a 'first response' capacity to critical incidents, refer to specialist support and to provide ongoing presence and followup
- Work closely and in partnership with leadership and other wellbeing staff in schools to provide pastoral care and practical support to students, families and staff as requested
- Are well positioned to work across the whole school to 'build a sense of' community, harmony and cohesion
- Is trained and equipped to provide their school with a unique dimension of social, emotional and spiritual support in line with the DECD wellbeing framework

Partnerships

Your local school and your local church work together to provide your Pastoral Care Worker.



WHY A CHAPLAINCY SERVICE?

The Facts

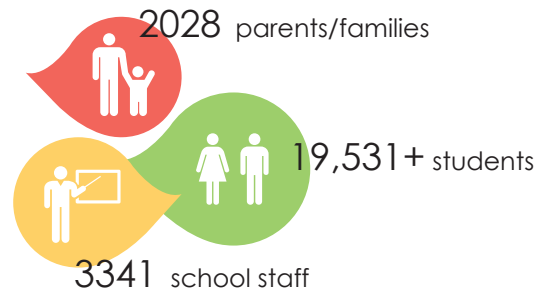
Students today face a more complex and challenging environment than ever before.

- 15% of young Australians are currently experiencing an anxiety condition
- Bullying is the leading social issue among SA students
- Just under half of all divorces occur among couples with children under 18
- 15% of SA students miss out on breakfast

source: ABS Statistics collected 2007, 2013

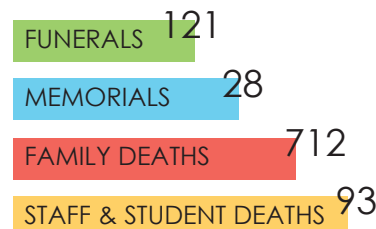
Support in SA Schools:

Outcomes from a 2014 Survey



Figures based on results from 20 day survey

Grief & Loss



Figures based on 5 monthly overview / *PCW's address the top two social issues expressed by students in the 2013 ABS Census of School

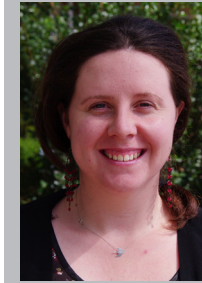
Other Activities

- Mentoring
- Healthy Eating*
- Support for Parents
- Suicide Prevention
- Anti-Bullying*



Cut off and keep for reference

PASTORAL CARE WORKER: ANNELISE BRADLEY



Annelise has been working in the West Lakes Shore School R-7 community since 2012.

She works as an educator at our OSHC and Vacation Care program and

volunteers as a Children's Liturgy Leader within the Le Fevre Catholic Community.

As the Pastoral Care Worker Annelise works alongside staff and families to foster a positive and supportive learning environment where children are supported to become confident life long learners. Her role is to listen to, encourage and offer support to students, their families and school staff.

Annelise can be reached via the school front office. Children and their families can also leave notes in the message boxes located in the PCW office, the front office and library.

Annelise's regular days at school are:

Monday and Thursday

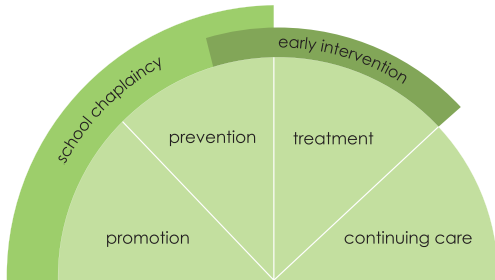
Contact Details

phone: 8449 7255

email: annelise.bradley699@schools.sa.edu.au

CHAPLAINCY & WELLBEING

Chaplaincy Services promote student wellbeing, engaging young people in activities that are preventative and which support early intervention and referral of mental health issues.



PRINCIPALS ARE SAYING...

The benefits of the program are clear and include; increased attendance at school by identified students, social and emotional support, increased access to social skills programs and families feeling supported in time of crisis such as suicide, death and family separations.

Primary School Principal

A lot of student problems never eventuate because Trev has provided support and encouragement early on. The students always walk away from their time with Trev with more bounce in their step....It is hard to imagine our school without thinking of our Worker.

High School Principal



Supporting School Communities
Across South Australia

Schools Ministry Group (SMG) coordinate and facilitate Chaplaincy Services in government schools across South Australia.

- School Chaplaincy commenced in SA Government schools in 1986.
- SMG partners with schools, local churches, state and federal governments to deliver Chaplaincy Services through the engagement of a Pastoral Care Worker.
- SMG works collaboratively with these partners in the recruitment, supervision and ongoing professional development of PCW's to ensure the placement of high quality workers who are well equipped to support young people and strengthen communities.
- Pastoral Care Workers are funded from two main sources - the National School Chaplaincy Program and the local church communities.
- The Chaplaincy Service provided through your PCW is a voluntary program offered to school communities.



www.smg.asn.au



*Helping a young generation
discover purpose, value & hope*

WEST LAKES SHORE SCHOOL R-7

OUR PASTORAL CARE WORKER

A Chaplaincy Service provided by
Schools Ministry Group (SMG)

